

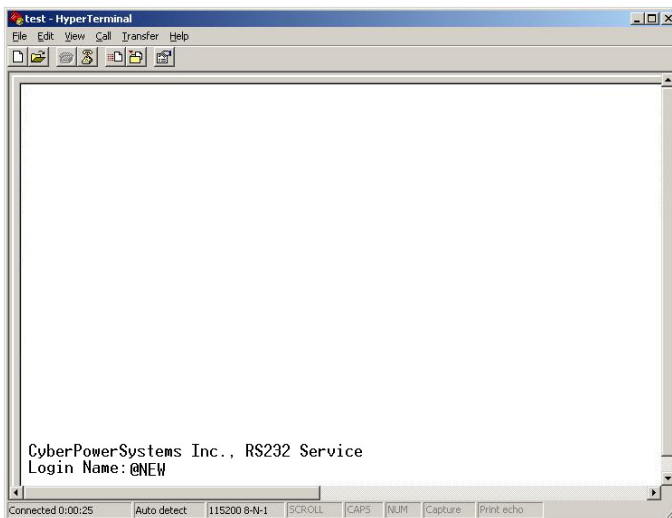
By upgrading the Firmware, you can obtain new features and updates improvements to existing functionality. There are two files to update ATS and LCD firmware :

*cpsatsmafw_xxx.bin

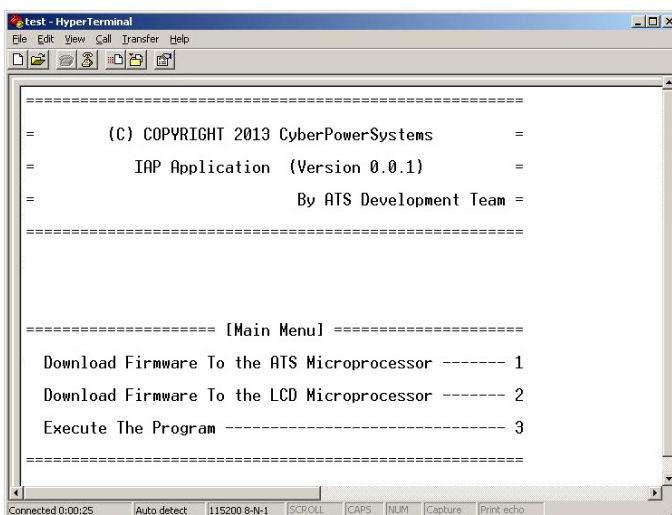
*cpsatslafw_xxx.bin

Note that the xxx is not part of the file name but is where the version number in the filename is given.

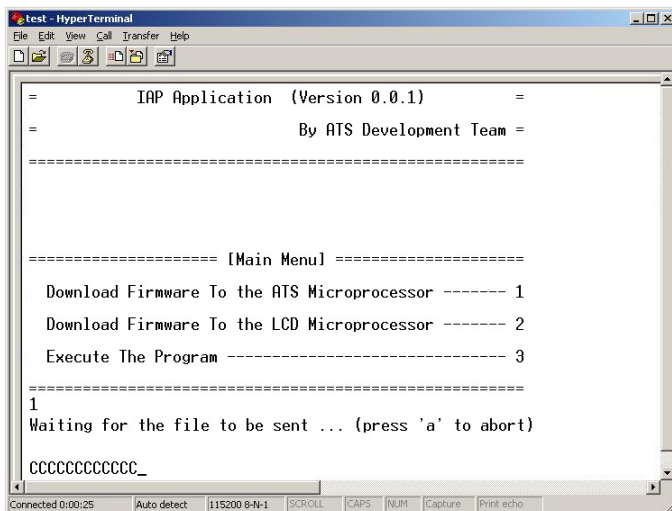
1. Download the latest firmware from cpsww.com
2. Extract the file to "C:\"
3. Open Hyper Terminal to connect ATS and use the command "@NEW".



4. ATS will reboot and show main menu on Hyperterminal.



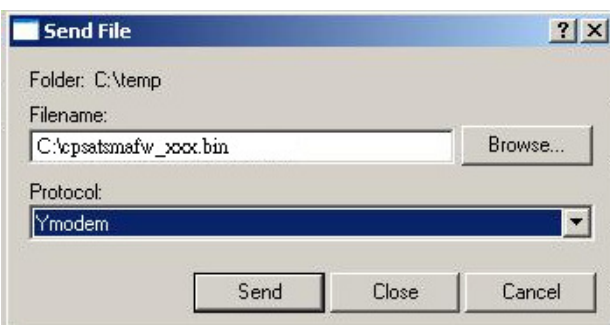
5. Press “1” to select ATS upgrade



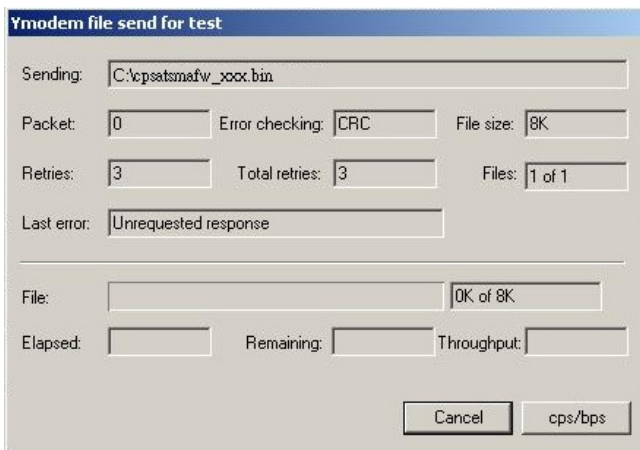
6. Select Transfer > Send File



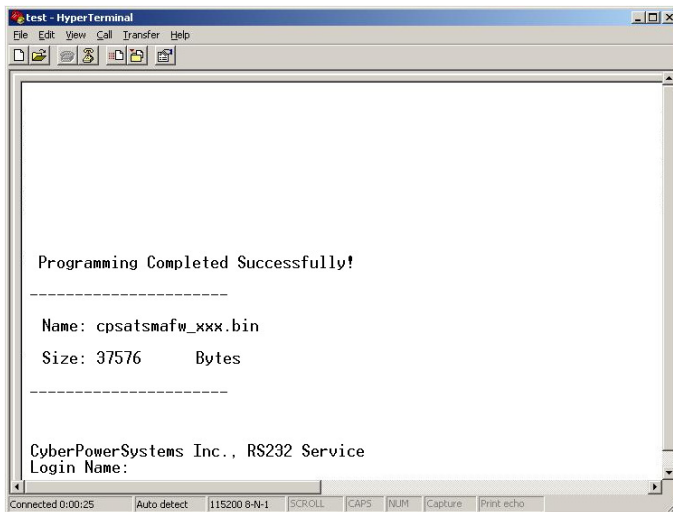
7. Note that the Ymodem protocol and file “C:\cpsatsmafw_xxx.bin” are selected in Hyperterminal



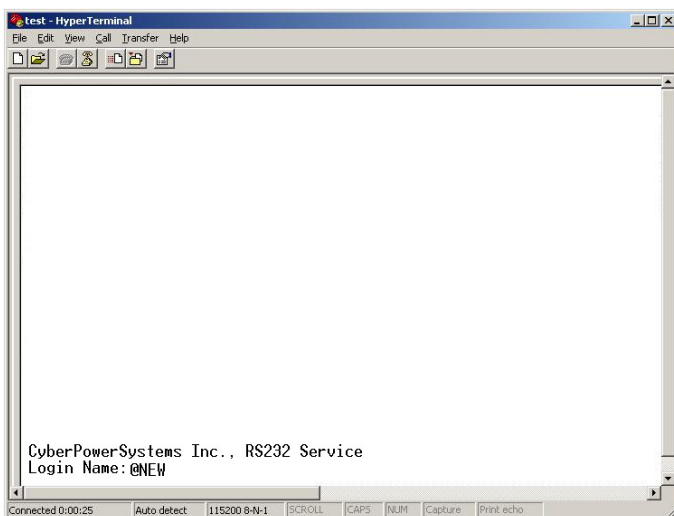
8. Download progress window will open after click Send button.



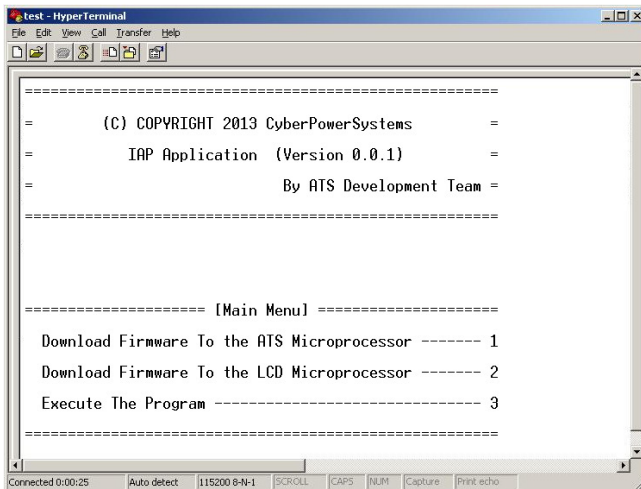
9. After upload binary file Hyperterminal will show as below.



10. Use the command "@NEW"



11. ATS will reboot and show main menu on Hyperterminal.



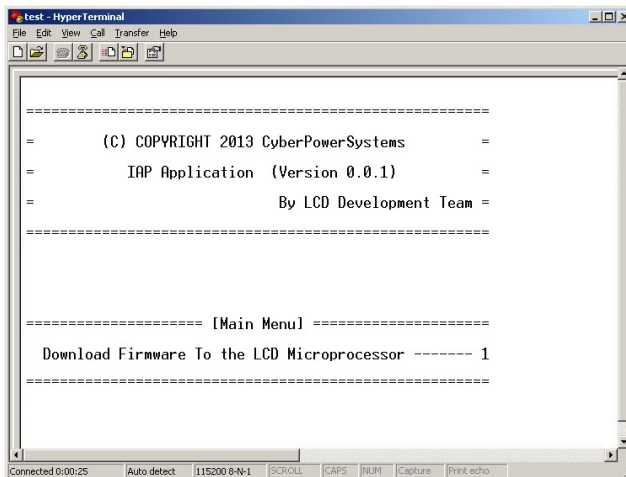
```
test - HyperTerminal
File Edit View Call Transfer Help

=====
=      (C) COPYRIGHT 2013 CyberPowerSystems      =
=      IAP Application (Version 0.0.1)           =
=      By ATS Development Team                    =
=====

===== [Main Menu] =====
Download Firmware To the ATS Microprocessor ----- 1
Download Firmware To the LCD Microprocessor ----- 2
Execute The Program ----- 3
=====

Connected 0:00:25  Auto detect  115200 8-N-1  SCROLL  CAPS  NUM  Capture  Print echo
```

12. press “2” to select LCD upgrade.



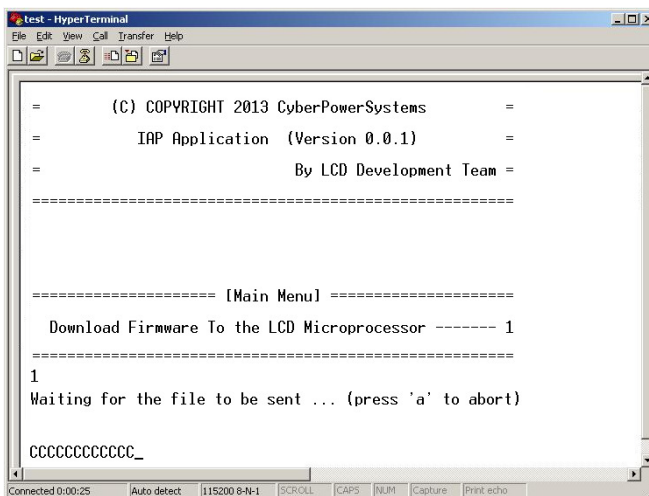
```
test - HyperTerminal
File Edit View Call Transfer Help

=====
=      (C) COPYRIGHT 2013 CyberPowerSystems      =
=      IAP Application (Version 0.0.1)           =
=      By LCD Development Team                    =
=====

===== [Main Menu] =====
Download Firmware To the LCD Microprocessor ----- 1
=====

Connected 0:00:25  Auto detect  115200 8-N-1  SCROLL  CAPS  NUM  Capture  Print echo
```

13. Press “1”



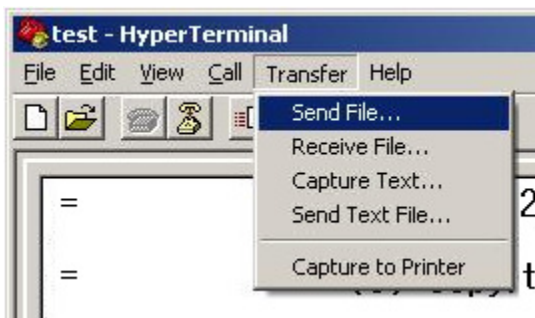
```
test - HyperTerminal
File Edit View Call Transfer Help

=====
=      (C) COPYRIGHT 2013 CyberPowerSystems      =
=      IAP Application (Version 0.0.1)           =
=      By LCD Development Team                    =
=====

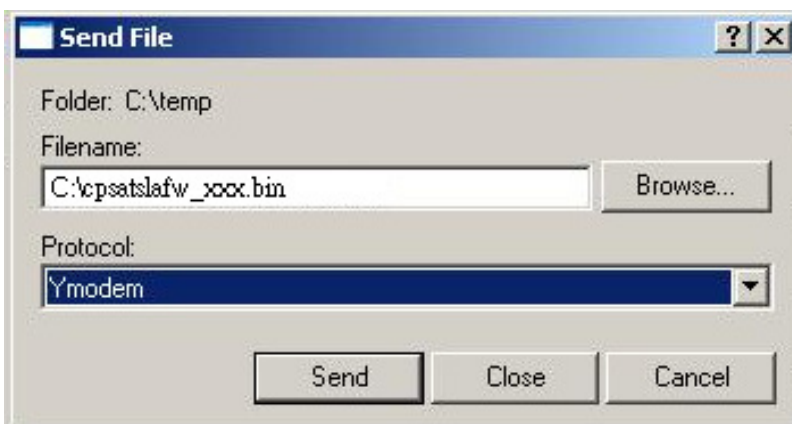
===== [Main Menu] =====
Download Firmware To the LCD Microprocessor ----- 1
=====
1
Waiting for the file to be sent ... (press 'a' to abort)
CCCCCCCCCCCCC_

Connected 0:00:25  Auto detect  115200 8-N-1  SCROLL  CAPS  NUM  Capture  Print echo
```

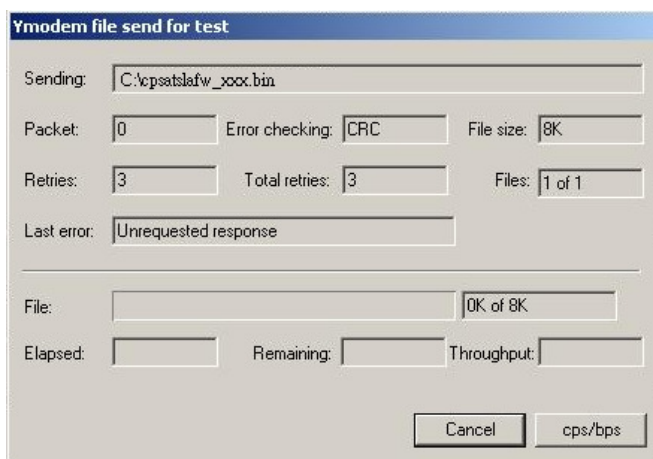
14. Select Transfer > Send File



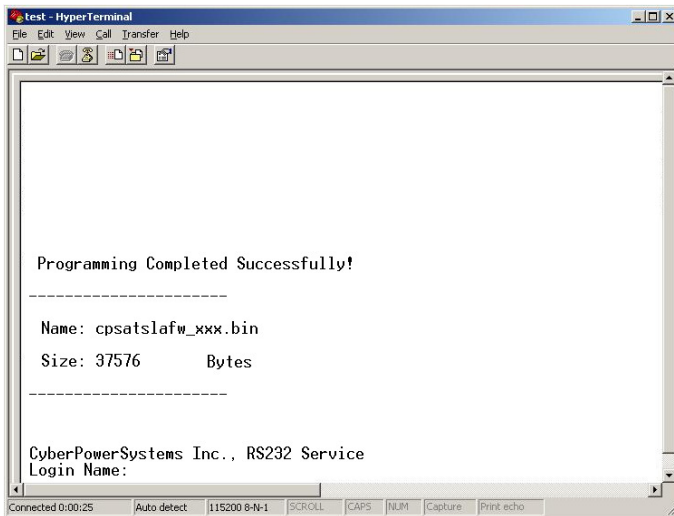
15. Note that the Ymodem protocol and file "C:\cpsatslafw_xxx.bin" are selected in Hyperterminal.



16. Download progress window will open after click Send button.



17. After upload binary file Hyperterminal will show as below.



The screenshot shows a HyperTerminal window titled "Test - HyperTerminal". The main text area displays the following information:

```
Programming Completed Successfully!

-----

Name: cpsatslafw_xxx.bin
Size: 37576      Bytes

-----

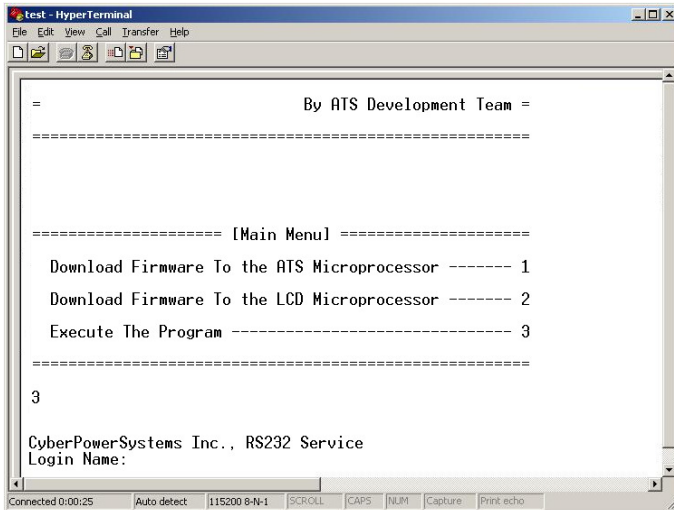
CyberPowerSystems Inc., RS232 Service
Login Name:
```

The status bar at the bottom indicates "Connected 0:00:25", "Auto detect", "115200 8-N-1", and buttons for "SCROLL", "CAPS", "NUM", "Capture", and "Print echo".

You can check to see if the firmware upgrade is successful by checking the “CyberPower System Firmware Version ” after login.

Note :

1. Please do not turn the ATS off when processing the firmware upgrade.
2. Press “3” to exit the main menu of firmware upgrade.



The screenshot shows a HyperTerminal window titled "Test - HyperTerminal". The main text area displays the following information:

```
=                               By ATS Development Team =
=====

===== [Main Menu] =====

Download Firmware To the ATS Microprocessor ----- 1
Download Firmware To the LCD Microprocessor ----- 2
Execute The Program ----- 3
=====

3

CyberPowerSystems Inc., RS232 Service
Login Name:
```

The status bar at the bottom indicates "Connected 0:00:25", "Auto detect", "115200 8-N-1", and buttons for "SCROLL", "CAPS", "NUM", "Capture", and "Print echo".