

By upgrading the Firmware, you can obtain new features and updates improvements to existing functionality. There are two files to update ATS and LCD firmware :

*cpsatsmaf_w_xxx.bin

*cpsatslaf_w_xxx.bin

Note that the xxx is not part of the file name but is where the version number in the filename is given.

1. Download the latest firmware from cpsww.com
2. Extract the file to "C:\"
3. Open Hyper Terminal to connect ATS and use the command "@NEW".

In order for Hyper Terminal to interface with the ATS PDU, the PC/server must be connected directly to the ATS PDU via the serial port.

1. Use the included RJ45/DB9 serial port connection cable. Attach one end to the serial port on the front of the ATS PDU, and the other end to the PC/server.

2. Open the Hyper Terminal software on your PC and select a name and icon for the connection.

3. Setup the COM port settings using the following values

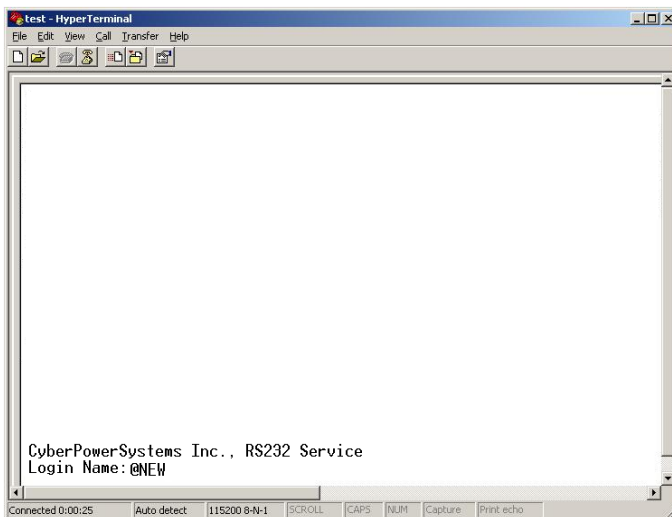
* Bits per second: 38400

* Data bits: 8

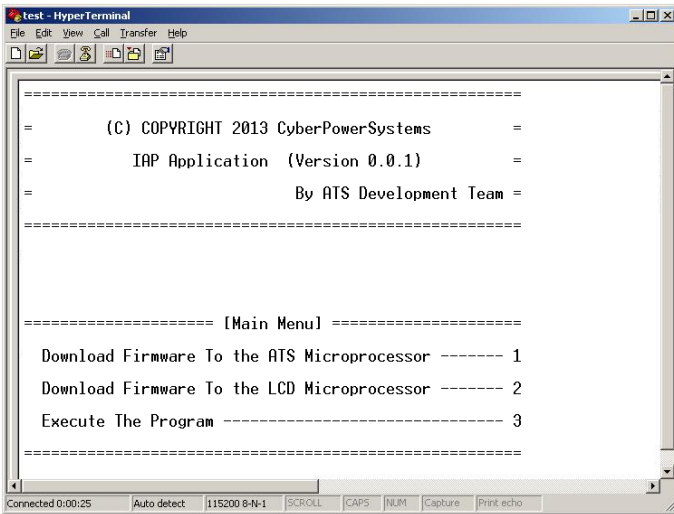
* Parity: None

* Stop bits: 1

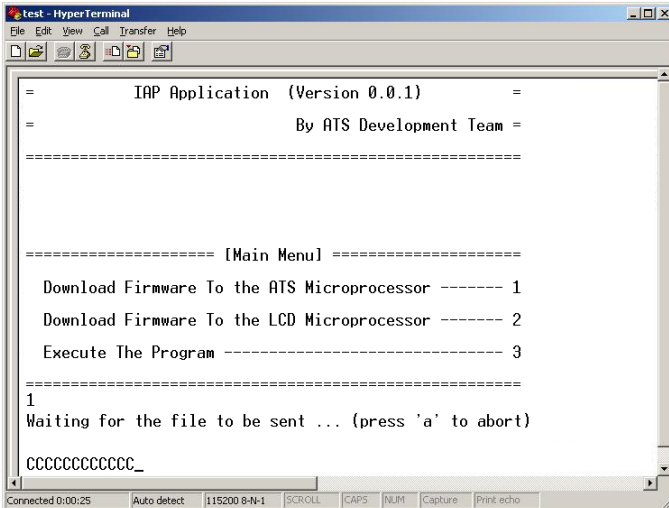
* Flow control: None



4. ATS will reboot and show main menu on Hyperterminal.



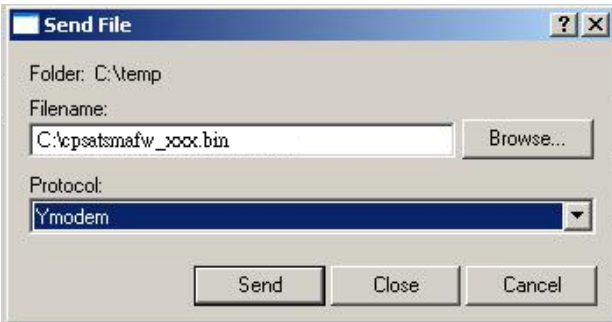
5. Press "1" to select ATS upgrade



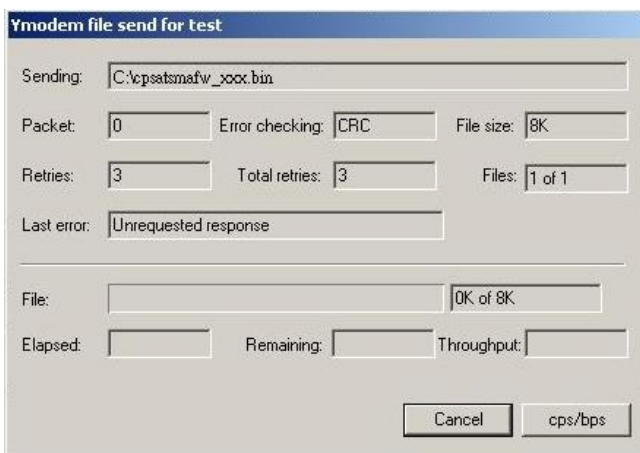
6. Select Transfer > Send File



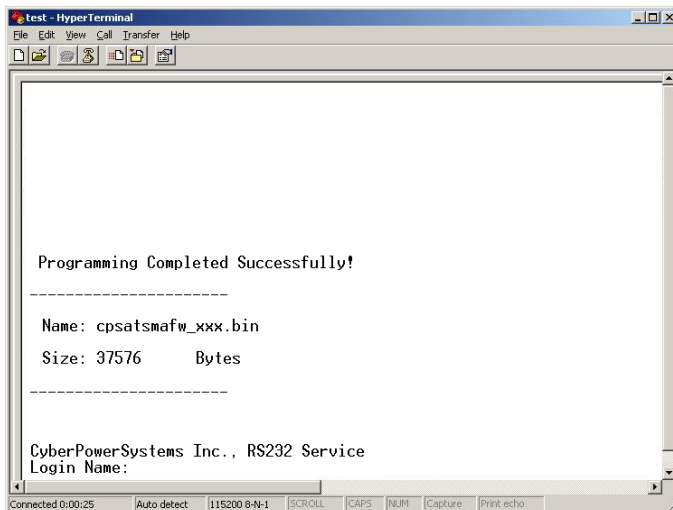
7. Note that the Ymodem protocol and file "C:\cpsatsmaf_w_xxx.bin" are selected in Hyperterminal



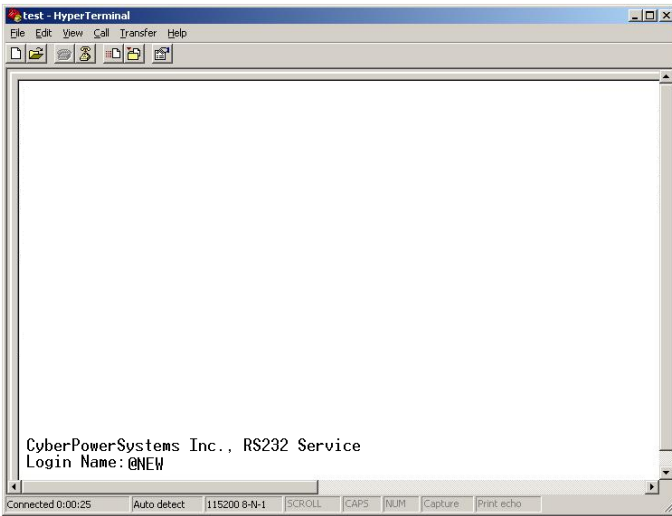
8. Download progress window will open after click Send button.



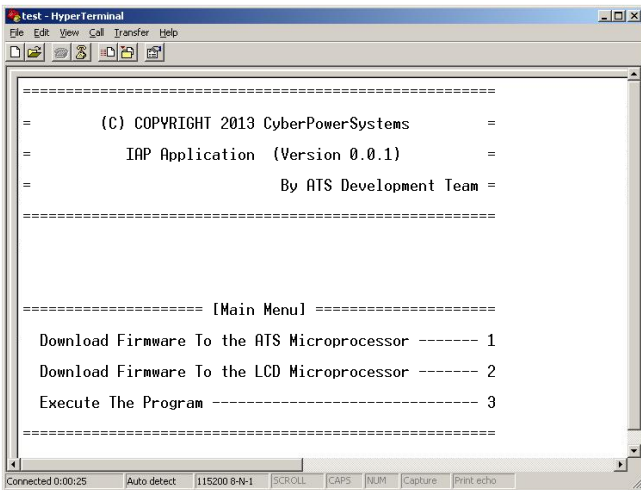
9. After upload binary file Hyperterminal will show as below.



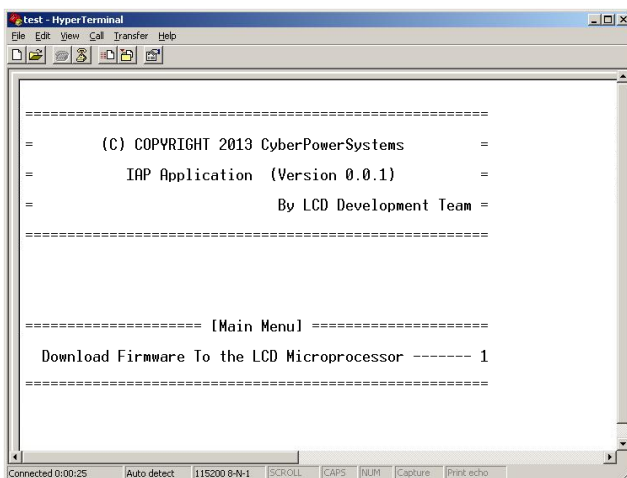
10. Use the command “@NEW”



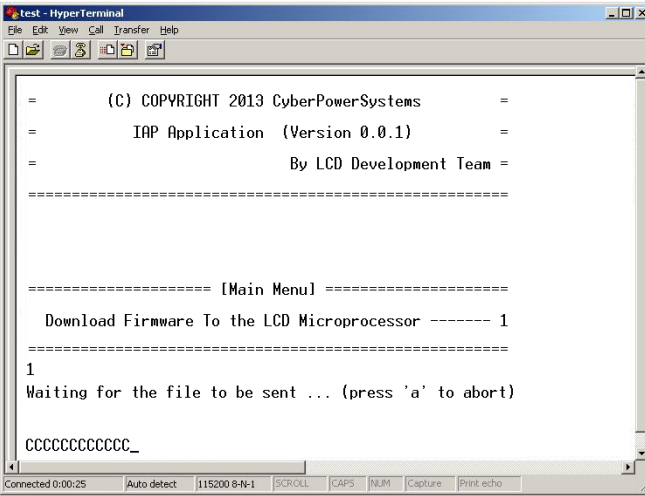
11. ATS will reboot and show main menu on Hyperterminal.



12. press “2” to select LCD upgrade.



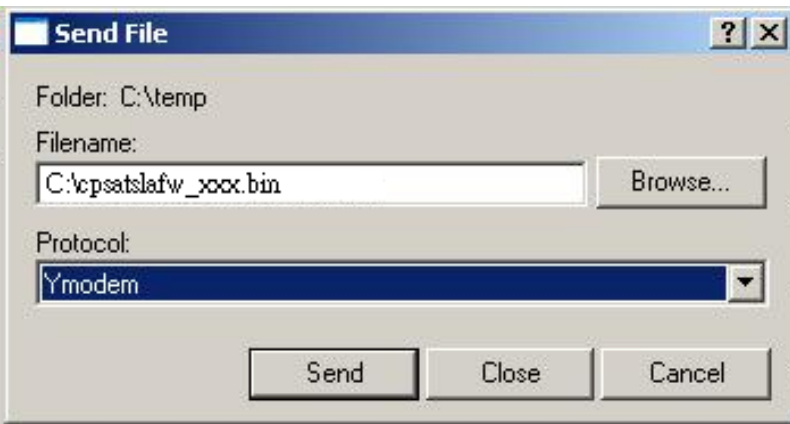
13. Press “1”



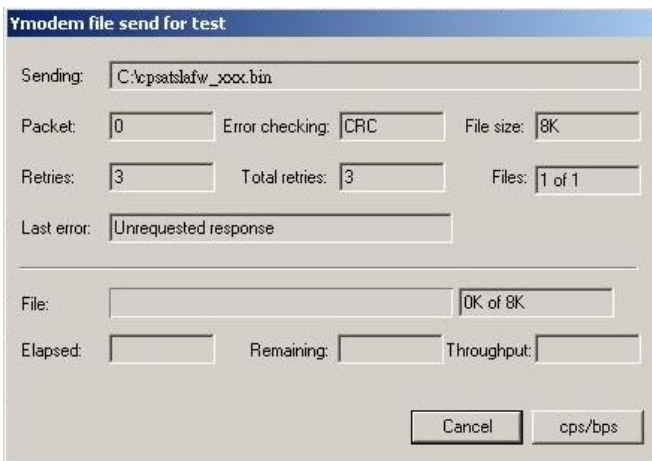
14. Select Transfer > Send File



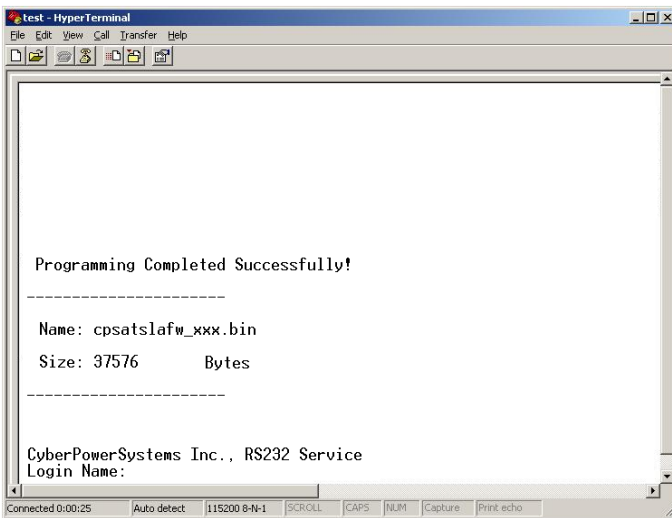
15. Note that the Ymodem protocol and file “C:\cpsatslafw_xxx.bin” are selected in Hyperterminal.



16. Download progress window will open after click Send button.



17. After upload binary file Hyperterminal will show as below.



You can check to see if the firmware upgrade is successful by checking the “CyberPower System Firmware Version ” after login.

Note:

1. Please do not turn the ATS off when processing the firmware upgrade.
2. Press "3" to exit the main menu of firmware upgrade.

