

CyberPower® POWERPANEL® BUSINESS 4

Intuitive Power Management

PowerPanel Business 4 software makes it easy to monitor and manage CyberPower UPS systems and network-connected PDUs anytime from anywhere.

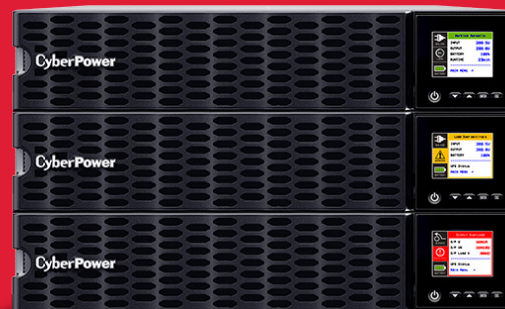
- **User-Friendly Interface** Color-coded for instant confirmation of power status and alerts.
- **Powerful Software Features** Includes physical and virtual infrastructure support.
- **Power Management Options** Manage power using Local, Remote or Management software.



INDUSTRY-LEADING POWER MANAGEMENT

PowerPanel Business 4 software features:

- **UPS Status Panel** Stays in view during operation
- **Dashboard** Immediate view of status alerts and troubleshooting
- **UPS Configuration** Easy-to-use controls make setup simple
- **Auto Shutdown** Protects servers and workstations from data loss
- **Alert Notifications** Sends to email, text, and messaging services
- **Remote Access** Allows remote management from a web browser
- **Remote Scheduling** Admins can plan remote management tasks



SELECT THE RIGHT LEVEL OF MANAGEMENT



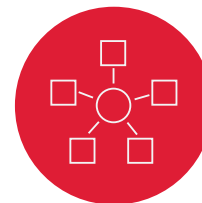
LOCAL

Control the UPS system locally by computer connected through USB or serial cable. Manage, monitor, and set auto shutdowns in case of longer outages.



REMOTE

Remotely manage network-connected equipment and automate shutdowns via RMCARD installed in the UPS system; oversee up to 50 clients on a network.

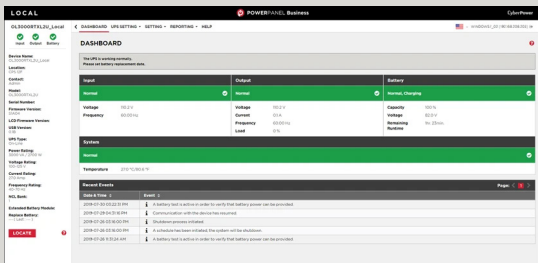
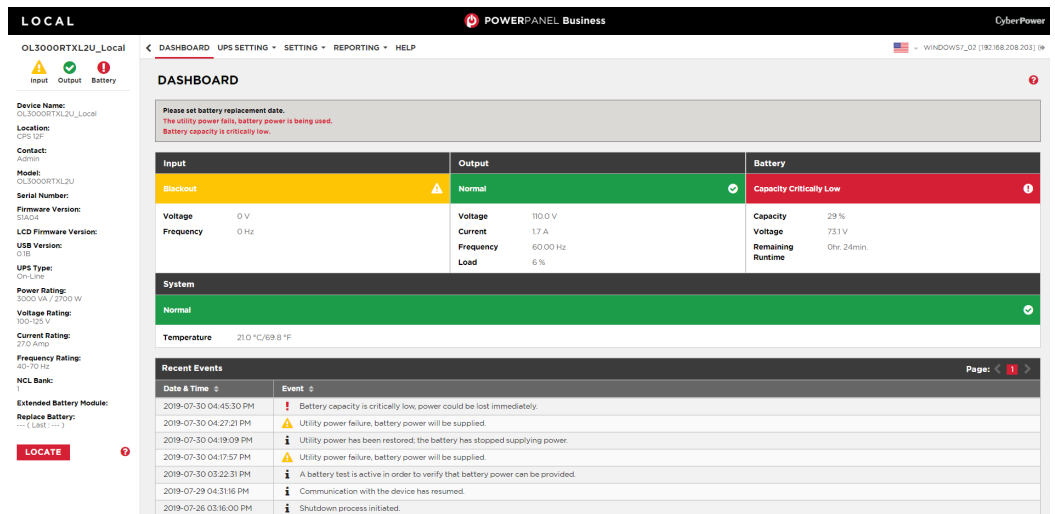


MANAGEMENT

Enables monitoring and management of the host computer running Local or Remote modules and an unlimited number of network connected devices.

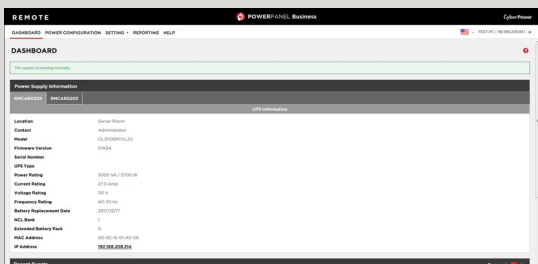
MANAGEMENT AND CONTROL YOUR WAY

PowerPanel® Business 4 supports multiple OS systems including Windows, Mac, VMware and Linux. Virtual infrastructure support for VMware, Hyper-V, and Citrix. The application is “future flexible” so It will easily adapt to future upgrades.



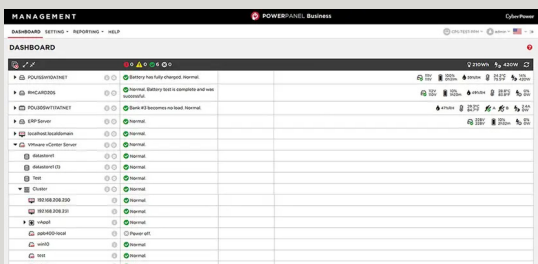
LOCAL

In Local, the dashboard page provides an overview of the system operation. This includes system summary, UPS status, recent events and UPS information.



REMOTE

In Remote, the dashboard page provides an overview of the system, including system summary, power supply information and recent events.



MANAGEMENT

In Management, the dashboard provides control of power equipment and infrastructure such as VMware virtualization.