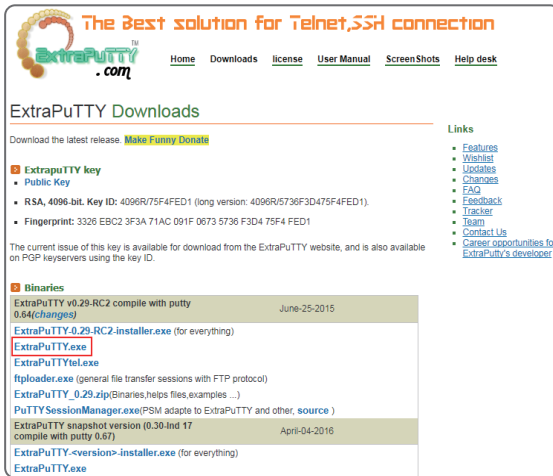


ATS PDU Firmware Upgrade Instructions (Example using ExtraPutty)

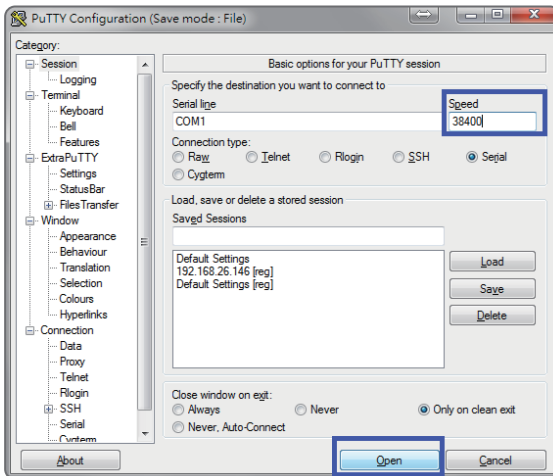
By upgrading the Firmware, you can obtain new features, updates and improvements to existing functionality.

Follow these steps to upgrade the firmware.

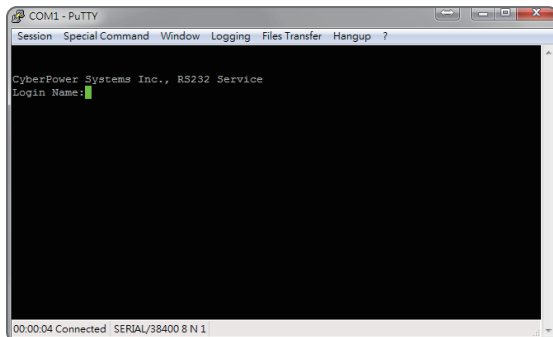
1. Download ExtraPutty from www.extraputty.com/download.php.



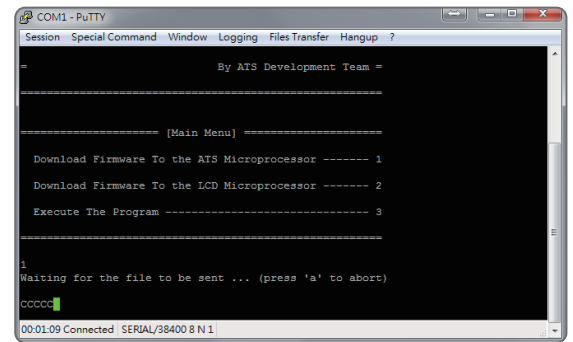
2. Open Putty, set the Baud Rate speed to 38400 and click Open.



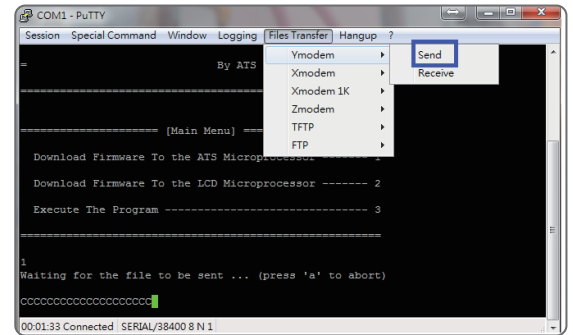
3. Type the command @new.



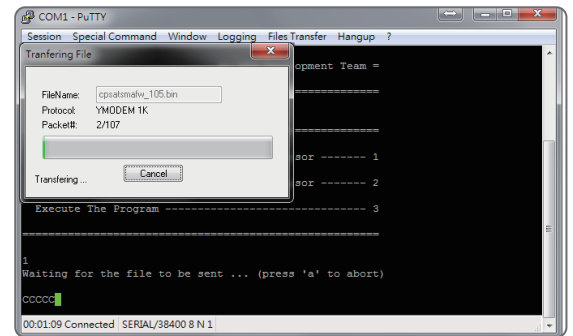
4. Press "1" to select ATS PDU upgrade.



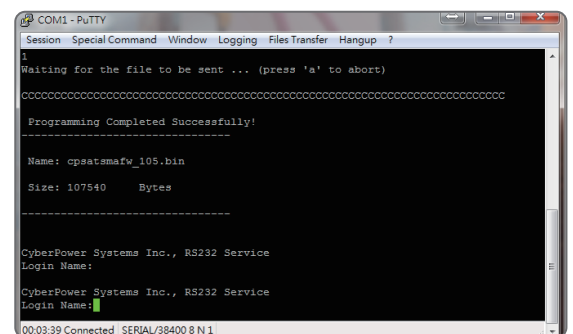
5. Select Files Transfer > Ymodem > Send.



6. Select the firmware file version to update. Verify it is the correct file, for example: cpsatsmafw_xxx.bin.



7. After uploading the binary file, PuTTY will display a successful completion message and return to the login prompt.



Note: If other Hyper Terminal software is performed, please setup the COM port settings using following values.

- * Bits per second: 38400
- * Data bits: 8
- * Parity: None
- * Stop bits: 1
- * Flow control: None